

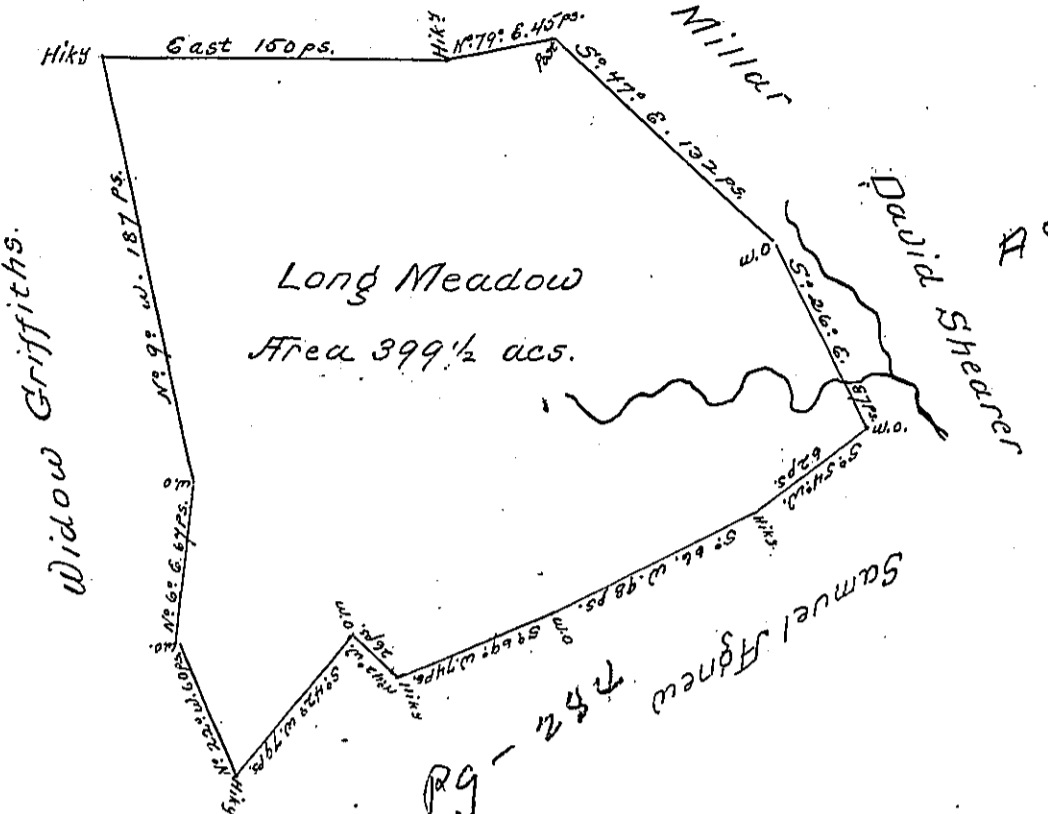
A 85-199

Hugh Patton

Jas. Miller

David Shearer

A 84-7



A 84-7

A Draught of a survey called "Long Meadow" situate on the waters of Chartiers Cr. in Washington County, containing 399 1/2 acs. strict measure, executed Oct. ye 22d 1785 for Jno. Keiper a fee of Robt. Downing in pursuance of a Certif. for 400 acs. granted to said Downing by the Commissioners appointed by Virginia to adjust the claims to unpatented lands in the Counties of Monongahela and Ohio and duly entered with the County Surveyor as appears from the List of Entries transmitted from the Surveyor Generals office

Entd. 18 Mar. 1780

Retd. 18 Jan. 87

Jno. Lukens Esqr. S. Genl.

Presley Nevill } Dep.
Matthew Ritchie }

IN TESTIMONY that the above is a copy of the original remaining on file in the Department of Internal Affairs of Pennsylvania, made conformably to an Act of Assembly approved the 16th day of February, 1833, I have hereunto set my Hand and caused the Seal of said Department to be affixed at Harrisburg, this first day of April 1902

James W. Patton
Secretary of Internal Affairs.